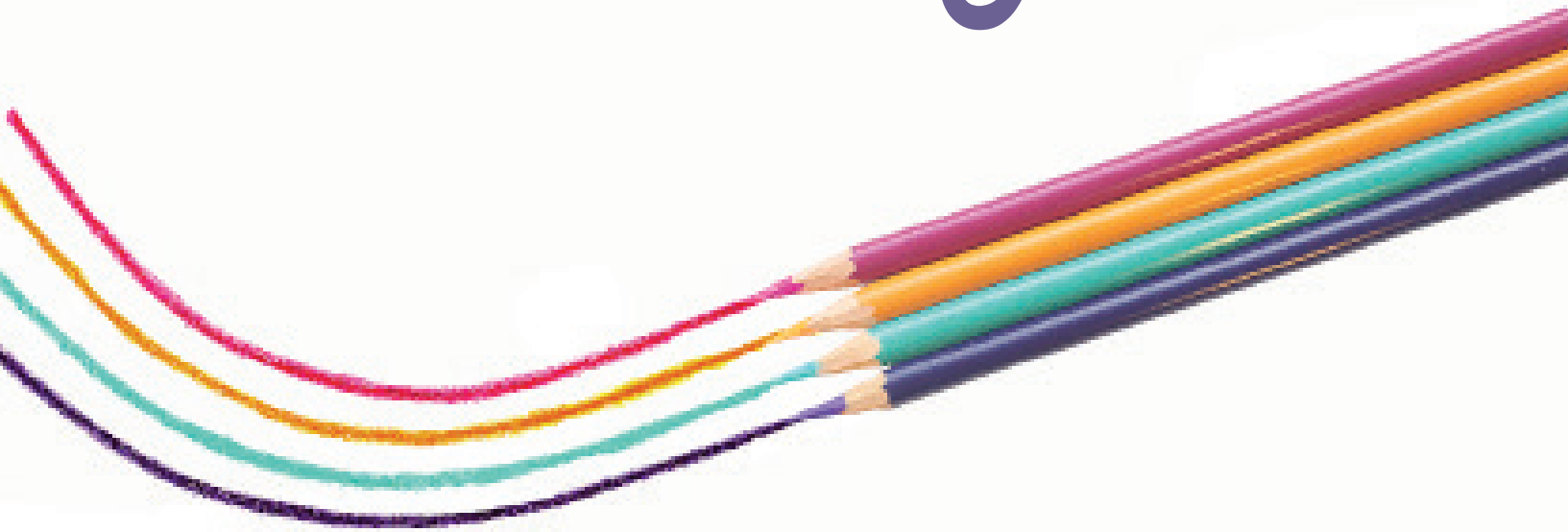


re:imagine



a missional learning community
especially for leadership teams
across the WEBA network

Residential Launch Weekend

14-15 March 2020

followed by 3 whole day hub gatherings, 6 months apart

Why?

To enable any leadership team in one of our Baptist Churches to build momentum in the transition towards mission becoming
the heart of all they are
and no longer
simply something they do.

Who for?

Any church that's feeling stuck.
Any church that wants to build momentum towards
the future God wants.

When?

We begin with a residential weekend, followed by three further, non-residential gatherings. These will take place every 6 months, over an eighteen month period.
We hope this will give time to embed
all God is leading us towards.

Nigel Coles explains...



Re-imagine?

“You will never see what you cannot imagine. Imagination is more important than knowledge. Imagination is everything”. (Albert Einstein)

“Your sons and daughters will prophesy, your old men will dream dreams, your young men will see visions”. (the prophet Joel 2:28).

Community?

Re-imagine is very much a community where people learn most from one another in the context of a shared experience. There is something very special about the dynamic exchange of thinking and practice, which takes place when teams grow in both confidence and vulnerability. No one is better than anyone else - but rather a fellow traveller on a journey, where everyone can learn from others and celebrate what God is doing.

Missional?

For many people this has simply replaced the word ‘mission’. If that is all we do, it’s not even akin to moving one deckchair on the Titanic. Missional represents a change of mind and practice. It means that, in order to glorify God, we make our main purpose *being equipped for, and engaging in*, the mission of God. This embraces both being and doing and can become the wellspring for our motivation and the direction for our living.

Learning?

One of the roots of meaning for our word ‘discipleship’ means learning. Unsurprisingly, coming out of the Hebrew mind, we only ‘know’ anything after we’ve done it, or the truth is embraced by real people and become part of the practice of their lives.

One of the greatest benefits of Re-imagine is helping to translate our *thinking into practice*.



The next Re:imagine cycle will begin with a residential launch weekend on the 14th and 15th March 2020, at the Webbington Hotel, Axbridge. (Pastoral Leaders will meet for the morning of the 13th March)

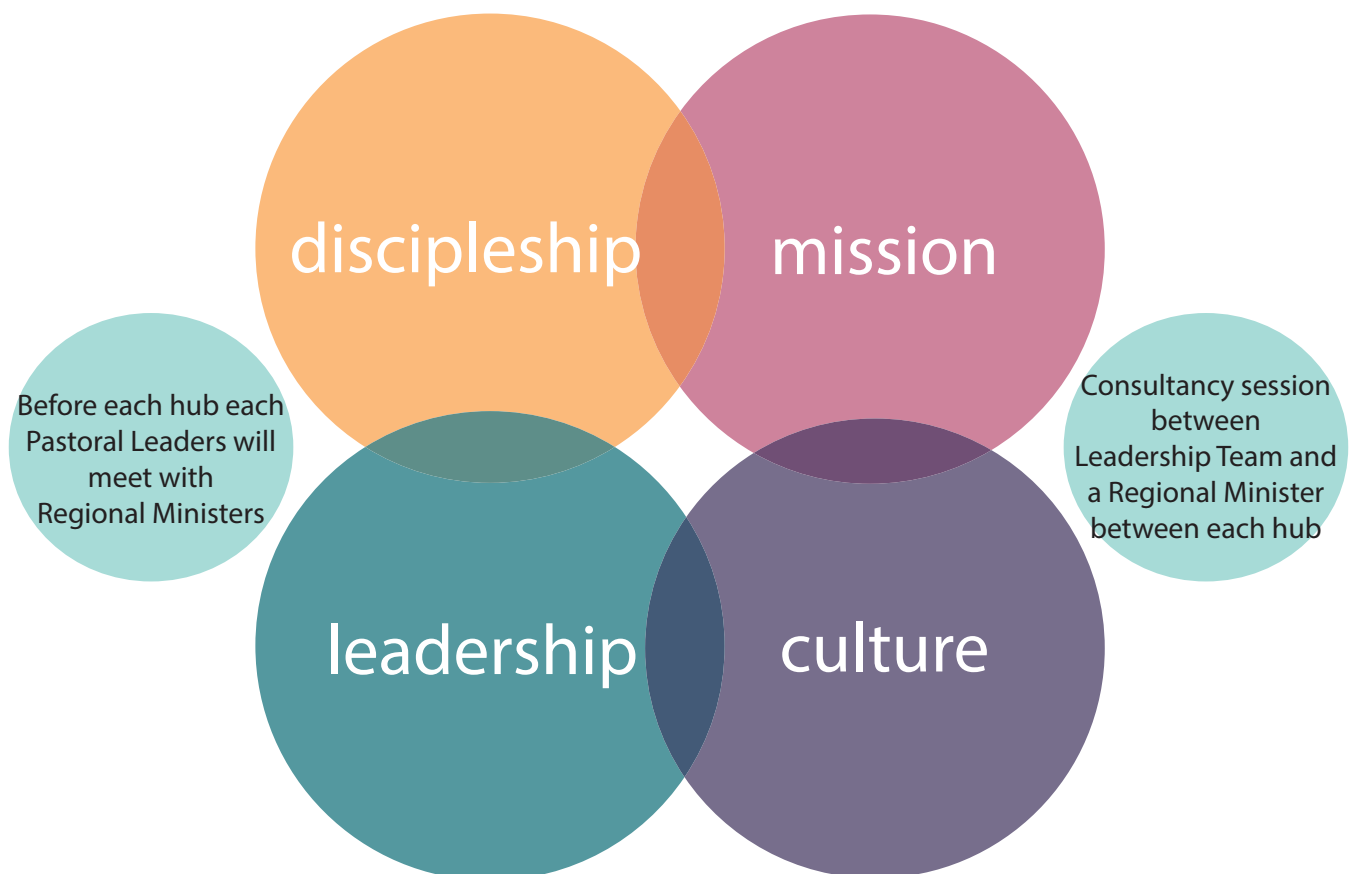
This will be followed by three further 'hub' days over an 18 month period:

Hub 2: Pastoral Leaders' morning 2nd October 2020, All Teams Day 3rd October 2020

Hub 3: Pastoral Leaders' morning 12th March 2021, All Teams Day 13th March 2021

Hub 4: Pastoral Leaders' morning 17th September 2021, All Teams Day 18th September 2021

Re-imagine is designed for teams. We think about 6 people is ideal,



Price for WEBA churches:

£145 per person including one night's hotel stay, all refreshments and other costs for the residential weekend and all three hubs.

Talk to a Regional Minister, or contact alex@seventy-two.network to book your place.